



**MOTOROLA SOLUTIONS**

# VB400 MOUNT REPLACEMENT GUIDE

## HOW TO REPLACE A VB400'S MOUNT IN THE FIELD

# CONTENTS

INTRODUCTION	3
REPLACE A KCLICK FAST MOUNT	4
REPLACE A QUICK RELEASE MOUNT	6
REPLACE A CLOSE FIT MOUNT	7
REPLACE AN ALLIGATOR MOUNT	9
TEST THE VB400	10

# INTRODUCTION

This document will walk you through replacing a VB400's mount (Klick Fast, Close Fit, Quick Release or Alligator Clip). Before you begin, please ensure you have the following equipment in front of you:

- 1 x VB400
- 1 x VB400 solo dock, connected to a PC running VideoManager
- 1 x torque set screwdriver PZ1 0.4 Nm
- 1 x torque set screwdriver PH0 0.22 Nm
- 1 x torque set screwdriver PH1 0.25 Nm
- 1 x torque set screwdriver PH0 0.20 Nm
- 1 x ESD tweezers
- 1 x ESD wrist strap
- 1 x connector extractor or nose pliers

For a **Klick Fast** model:

- **FRU/P/0999** - 1 x new backplate
- **FRU/P/2001** - 1 x new Klick Fast hardpoint
- **FRU/P/1003** (SCREW M2x6 Mach PH-PHIL PIST- BNZP 1000pcs) - 6 x new M2 x 6mm screws (for the VB400's outer casing) required
- **FRU/P/1020** - 1 x new M3 x 8mm screw (for the Klick Fast hardpoint)

For a **Quick Release** model:

- **FRU/P/0359** - 1 x new Quick Release base
- **FRU/P/0920** - 1 x new M3 x 10mm screw (for the Quick Release base)

For a **Close Fit** model:

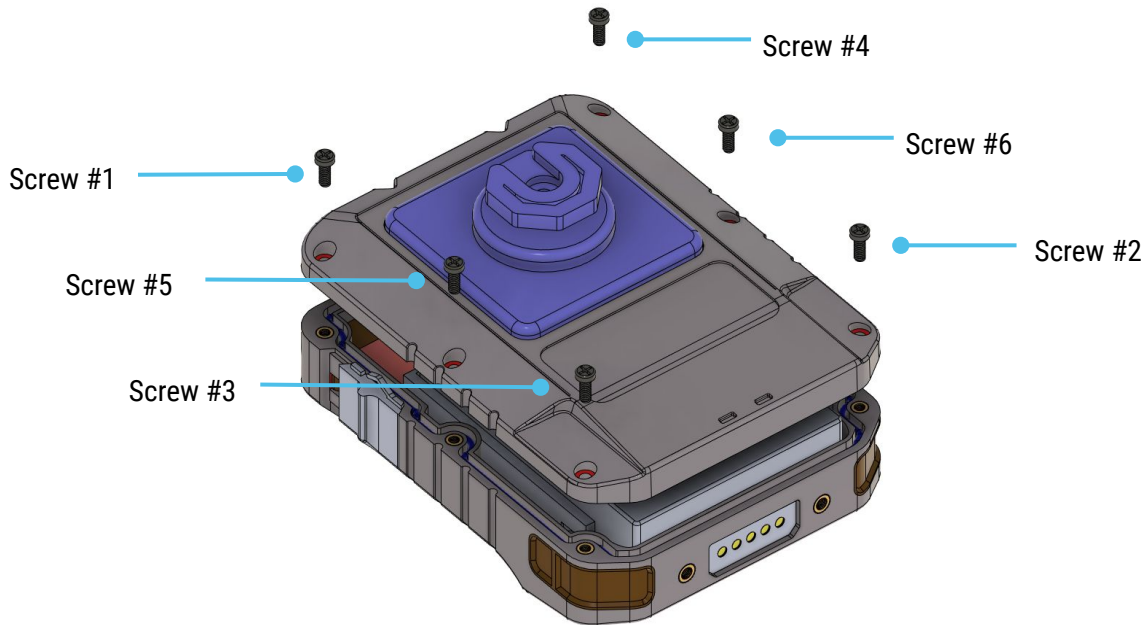
- **FRU/P/0999** - 1 x new backplate
- **FRU/P/0947** - 1 x new Close Fit mount plate
- **FRU/P/1003** (SCREW M2x6 Mach PH-PHIL PIST- BNZP 1000pcs) - 6 x new M2 x 6mm screws (for the VB400's outer casing) required
- **FRU/P/0958** - 1 x new M3 x 6mm screw (for the Close Fit mount plate)

For a **Alligator Clip** model:

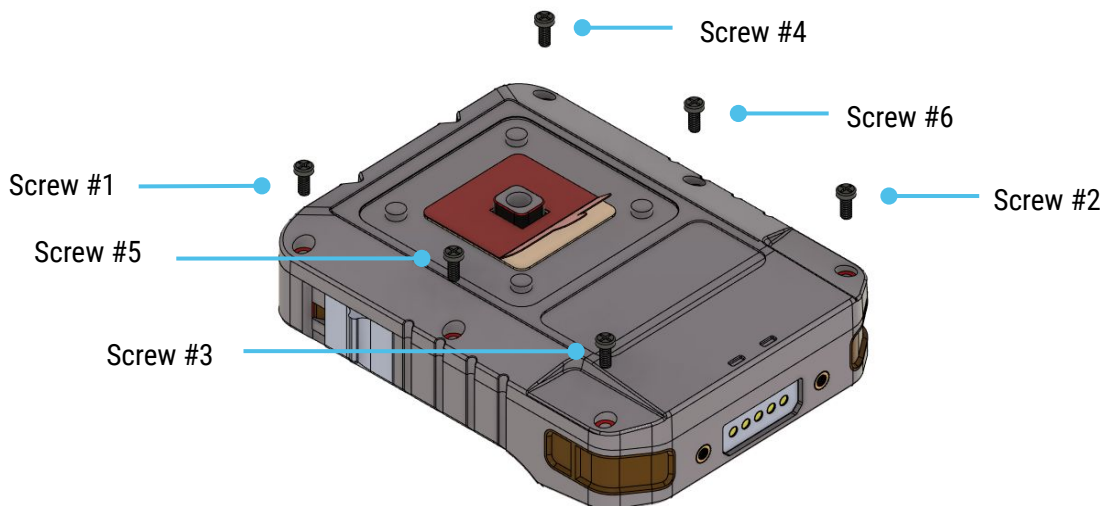
- **FRU/P/2002** - 1 x new Alligator Clip
- **FRU/P/0920** - 1 x new M3 x 10mm screw (for the clip)

# REPLACE A KLIK FAST MOUNT

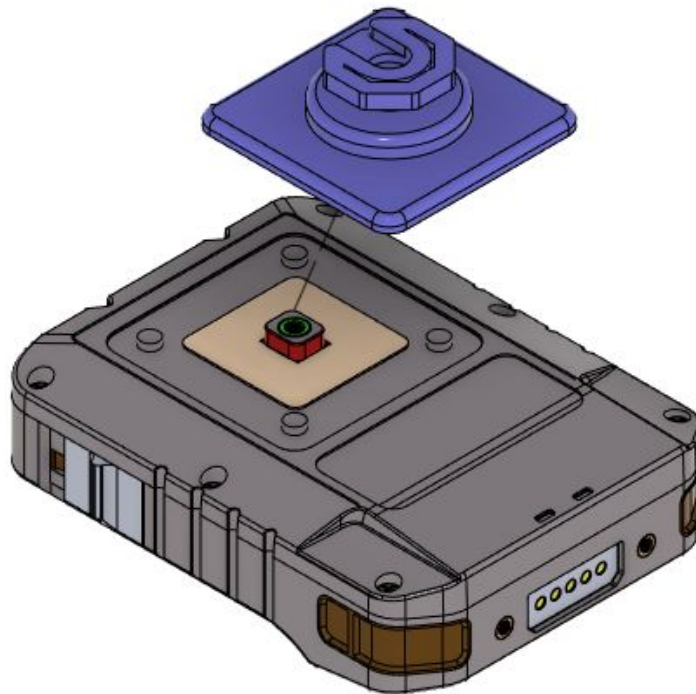
1. Ensure you are wearing the **ESD wrist strap**.
2. Using **screwdriver PH1**, remove the 6 screws from the backplate of the VB400 in a criss-cross fashion (starting with the screw in the top left, and ending with the screw in the bottom right).



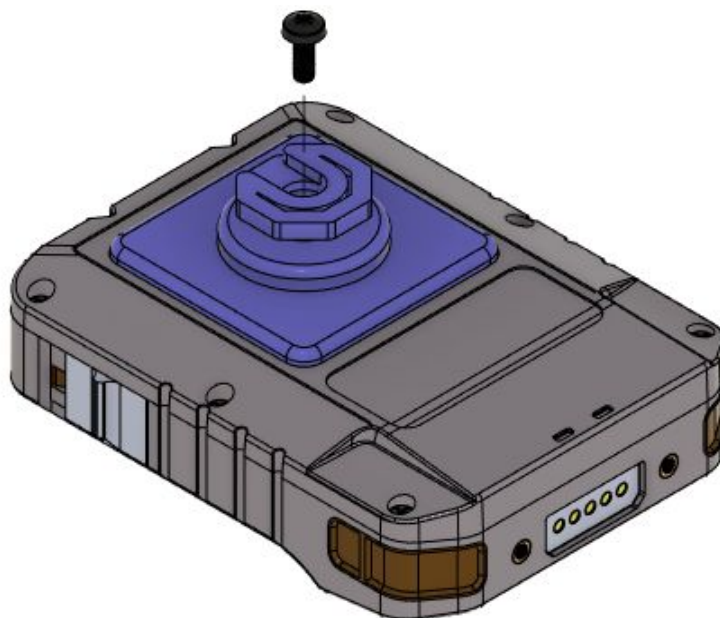
2. Lift the VB400's old backplate off the device, and set aside.
3. Position the new backplate on the device.
4. Using **screwdriver PH1**, replace the 6 screws from the backplate of the VB400 in a criss-cross fashion (starting with the screw in the top left, and ending with the screw in the bottom right).



5. Peel the protective cover off the backplate, and position the new Klick Fast hardpoint over it.

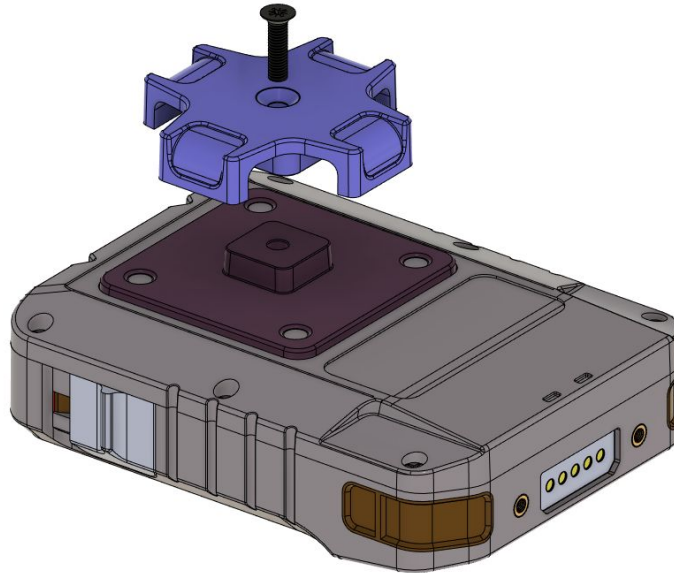


6. Using **screwdriver PZ1 0.4 Nm**, fit a new **M3 x 8mm** screw.

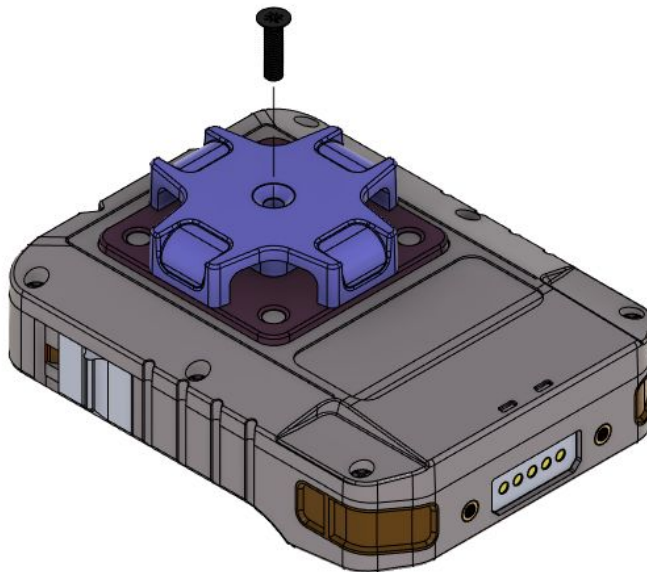


# REPLACE A QUICK RELEASE MOUNT

1. Ensure you are wearing the **ESD wrist strap**.
2. Using **screwdriver PZ1 0.4 Nm**, remove the **M3 x 10mm screw** from the backplate of the VB400, and the Quick Release mount itself.

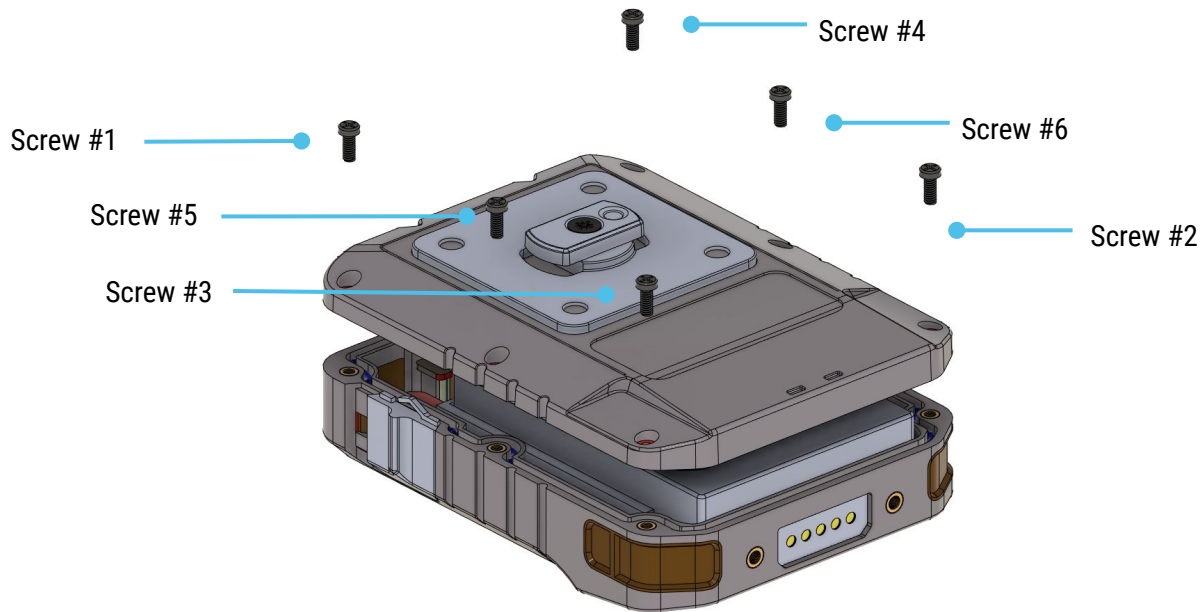


2. Position the new mount plate on the device.
6. Using **screwdriver PZ1 0.4 Nm**, fit a new **M3 x 10mm screw**.

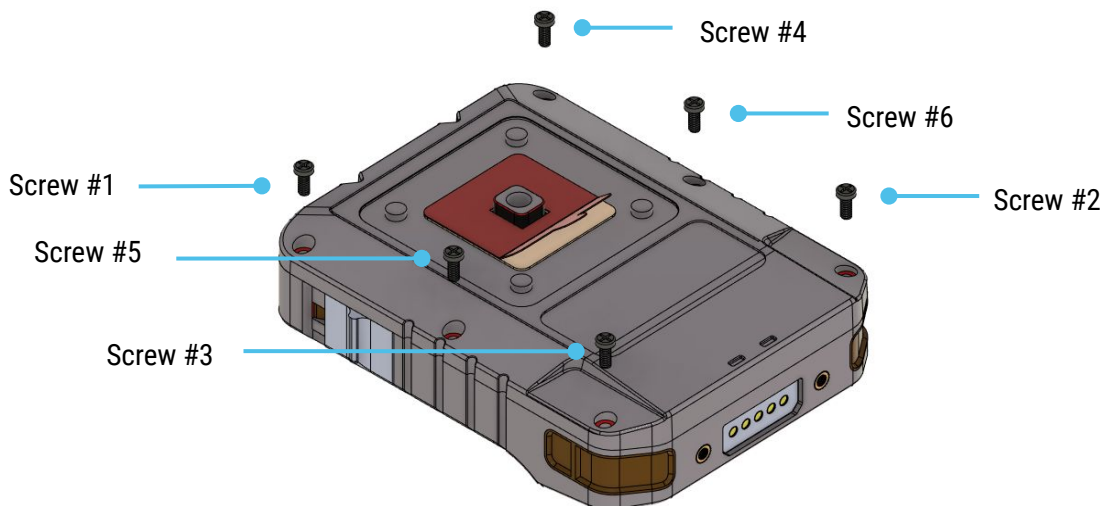


# REPLACE A CLOSE FIT MOUNT

1. Ensure you are wearing the **ESD wrist strap**.
2. Using **screwdriver PH1**, remove the 6 screws from the backplate of the VB400 in a criss-cross fashion (starting with the screw in the top left, and ending with the screw in the bottom right).

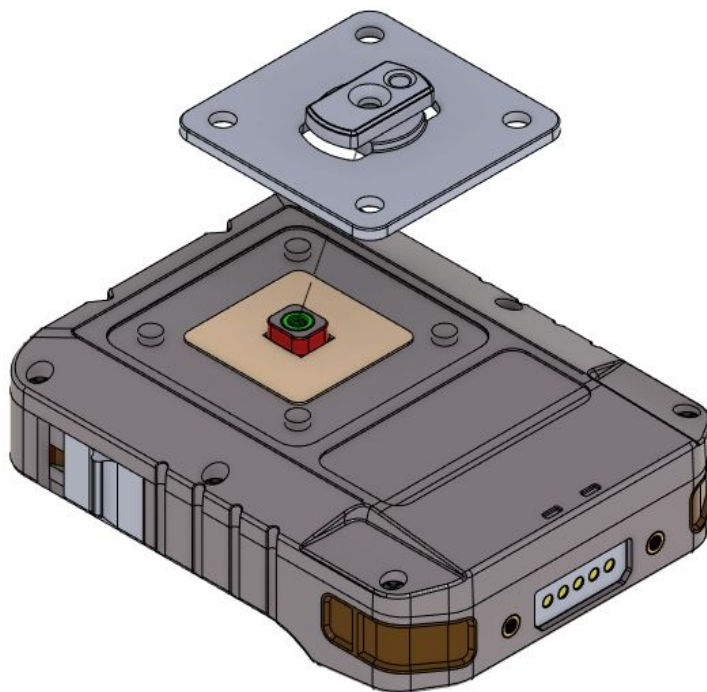


2. Lift the VB400's old backplate off the device, and set aside.
3. Position the new backplate on the device.
4. Using **screwdriver PH1**, replace the 6 screws from the backplate of the VB400 in a criss-cross fashion (starting with the screw in the top left, and ending with the screw in the bottom right).

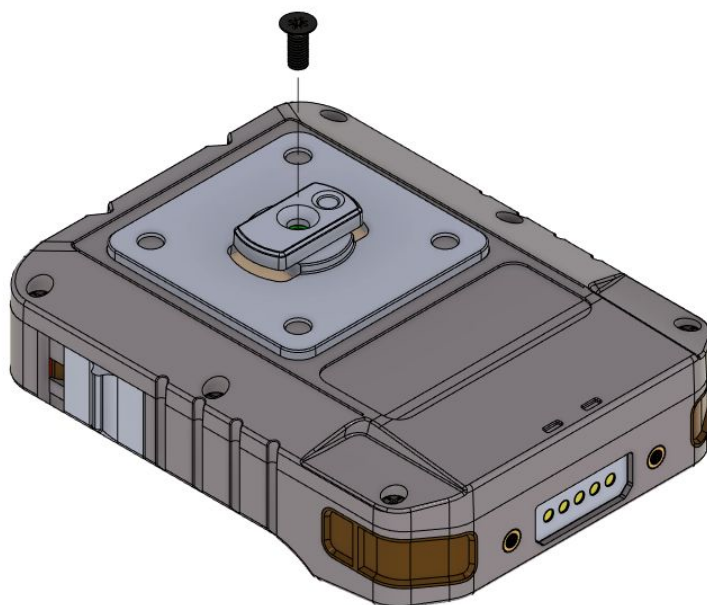




5. Peel the protective cover off the backplate, and position the new Close Fit hardpoint over it.



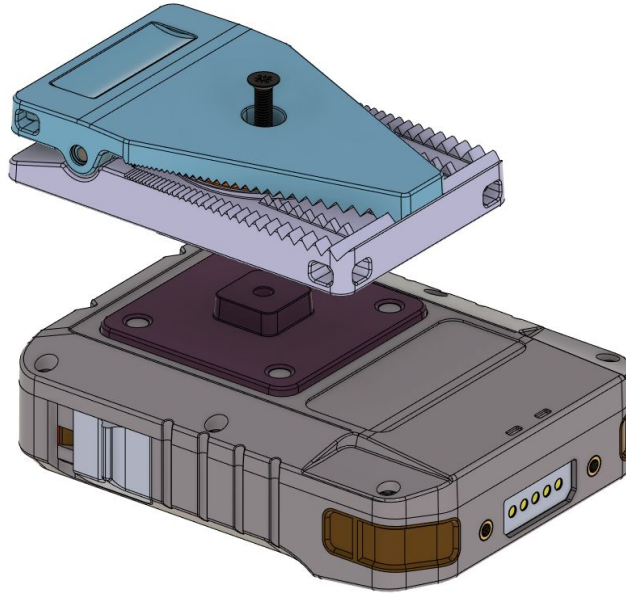
6. Using **screwdriver PZ1 0.4 Nm**, fit a new **M3 x 6mm** screw.



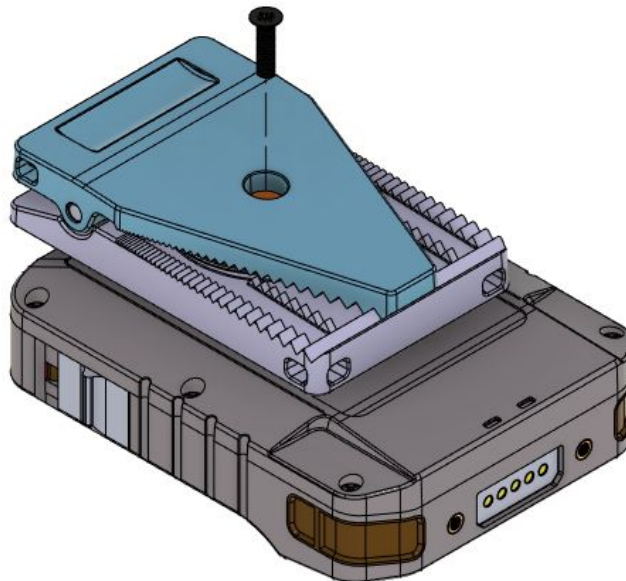


# REPLACE AN ALLIGATOR CLIP

1. Ensure you are wearing the **ESD wrist strap**.
2. Using **screwdriver PZ1 0.4 Nm**, remove the **M3 x 10mm screw** from the backplate of the VB400, and the Alligator clip itself.



2. Position the new mount plate on the device.
6. Using **screwdriver PZ1 0.4 Nm**, fit a new **M3 x 10mm screw**.



# TEST THE VB400

Engage the new mount with the relevant accessories to ensure everything functions properly.



Motorola Solutions, Inc. 500 West Monroe Street, Chicago, IL 60661 U.S.A.

Availability is subject to individual country law and regulations. All specifications shown are typical unless otherwise stated and are subject to change without notice. MOTOROLA, MOTO, MOTOROLA SOLUTIONS and the Stylized M Logo are trademarks or registered trademarks of Motorola Trademark Holdings, LLC and are used under license. All other trademarks are the property of their respective owners.

© 2023 Motorola Solutions, Inc. All rights reserved. 05/2023 [ED-011-011-04]